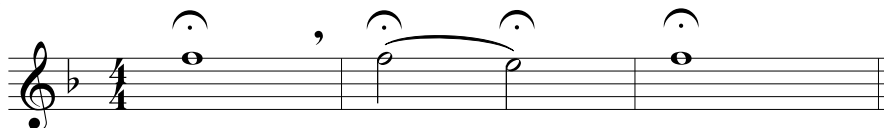


Clarinet 1

Concert Tuner in F

by Brian Harris

First Tuner



Chorale (Gregorian chant; adapted by Lowell Mason)

Musical notation for the Chorale section, consisting of four staves in 4/4 time. The melody is numbered 1 through 16. Circled numbers 5, 9, and 13 indicate the start of new phrases. The notation includes various note values, rests, and slurs.

1 2 3 4

5 6 7 8

9 10 11 12

13 14 15 16

Final Tuner

