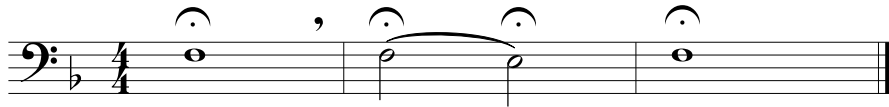


Trombone
Euphonium

Concert Tuner in F

by Brian Harris

First Tuner



Chorale (Gregorian chant; adapted by Lowell Mason)

Musical notation for the Chorale section, written in bass clef, 4/4 time, and F major. The melody consists of 16 measures, numbered 1 through 16. Measures 1, 5, 9, and 13 are circled. The melody is: 1 (F2), 2 (G2), 3 (A2), 4 (B2), 5 (C3), 6 (B2), 7 (A2), 8 (G2), 9 (F2), 10 (G2), 11 (A2), 12 (B2), 13 (C3), 14 (B2), 15 (A2), 16 (G2).

Final Tuner

